

## Easy Line - Carpet Planke



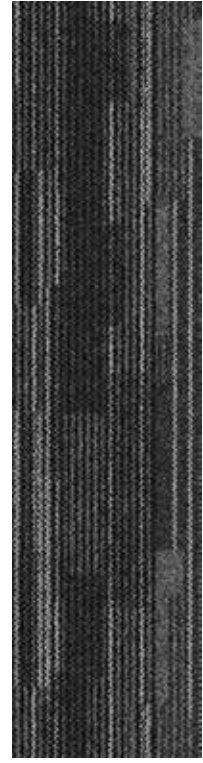
موكيت شرائح ايزي لاين



2685



2678



2679





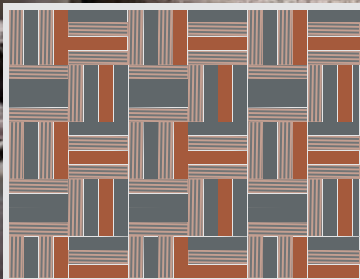
2623



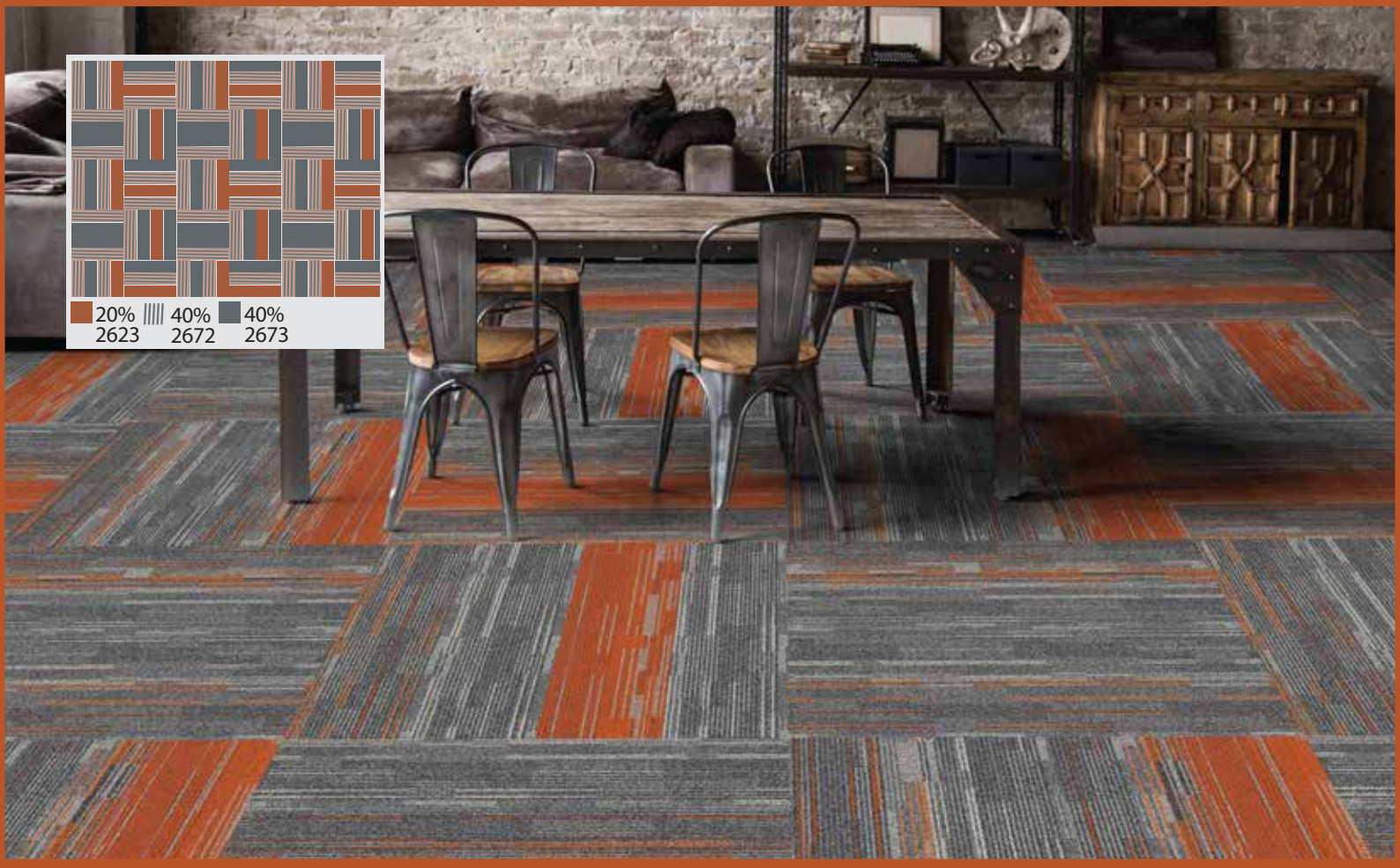
2672



2673



20% 2623  
40% 2672  
40% 2673





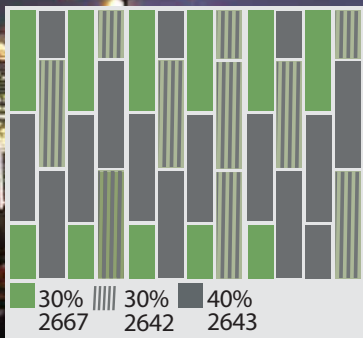
2667



2642



2643





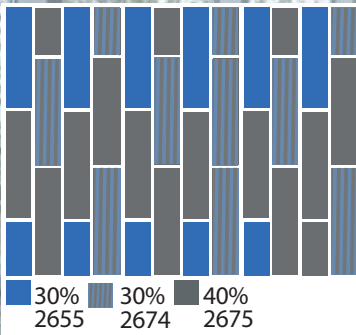
2655



2674



2675

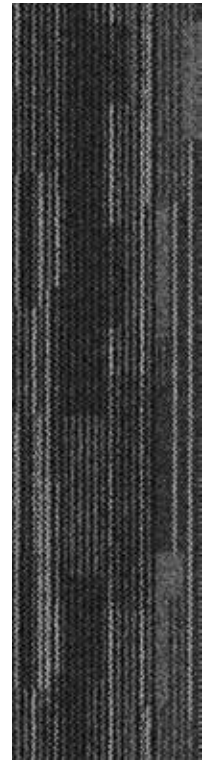




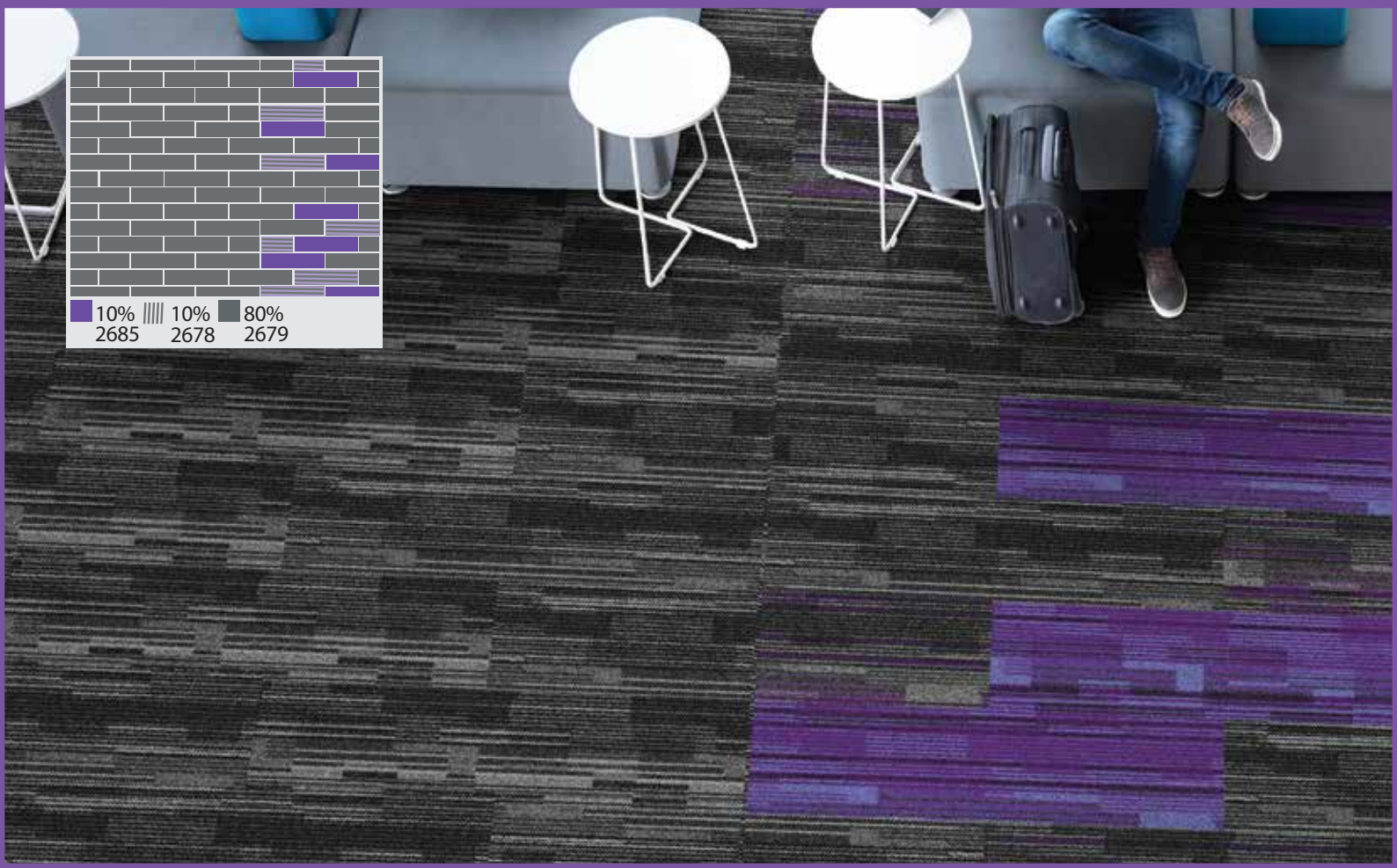
2685



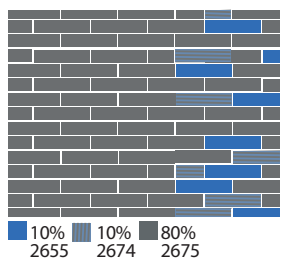
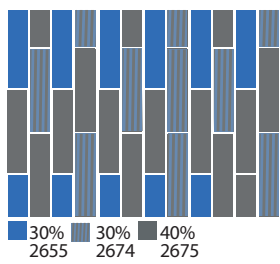
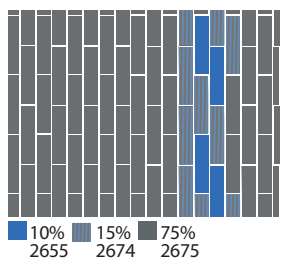
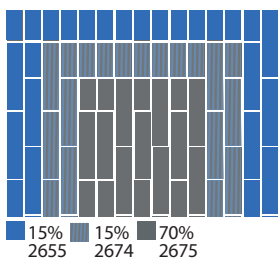
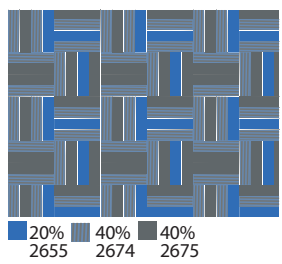
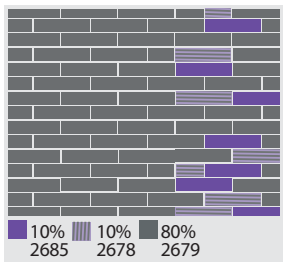
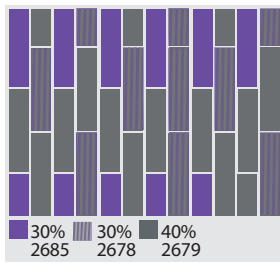
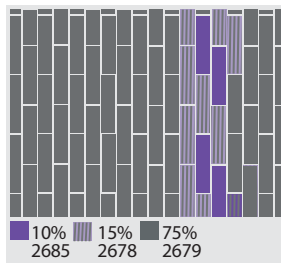
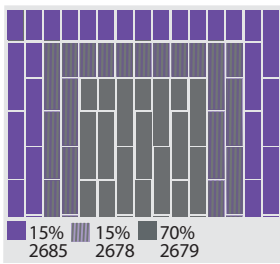
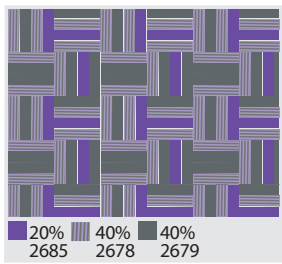
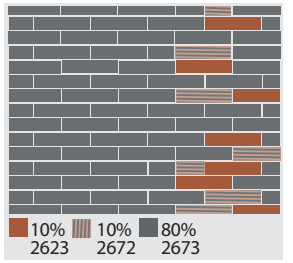
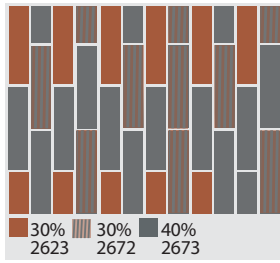
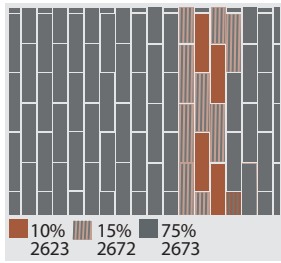
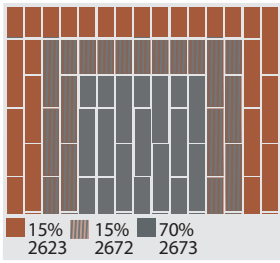
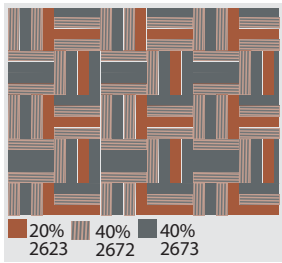
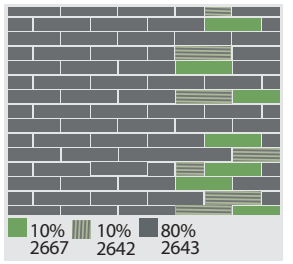
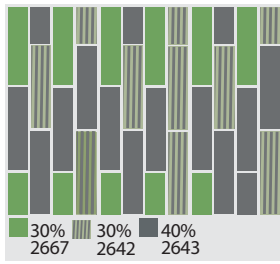
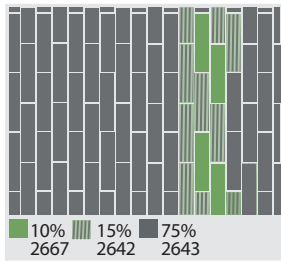
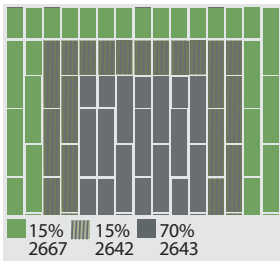
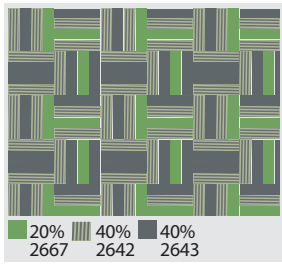
2678



2679



10%	10%	80%
2685	2678	2679



# Easy Line Carpet Plank

100cm  
25cm

## PRODUCT INFORMATION

Fiber	100% Olefin
Construction	Loop
Yarn Type	BCF Stanlon
Tufting Gauge	1/10"
Dye Method	Solution Dyed Olefin
Pile Weight	650 g/m <sup>2</sup>
Number of Tufts	193060/m <sup>2</sup>
Primary Backing	Non-Woven
Secondary Backing	PVC
Size	25 cm x 100 cm
Pile Height	4.0 mm ± 0.25 mm
Total Tile Height	7.0 mm ± 0.5 mm

## TECHNICAL PERFORMANCES

VOC (Green Label Plus)	ASTM D5116-06	<0.5 mg/m <sup>2</sup> /hour
Flammability (Pill Test)	ASTM D-2859//FF 1-70//16CFR 1630	Pass 8/8
Reaction to Fire	EN ISO 9239-1:2002	Dfl - s1
Static Propensity	ISO 6356	0.2 kV
Color Fastness	AATCC/16	5/5 on Grey Scale
Soiling Propensity	ASTM D 6540-00	4
Dimensional Stability	EN 986	< 0.20%

**Al Sourayia**  
Flooring and Furniture



@alsourayiasff



alsourayia



Ashlar



Quarter Turn



Herringbone