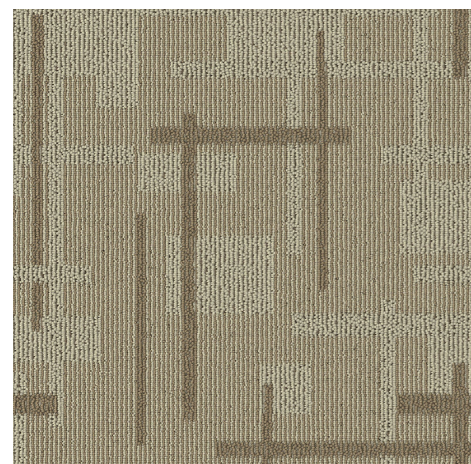
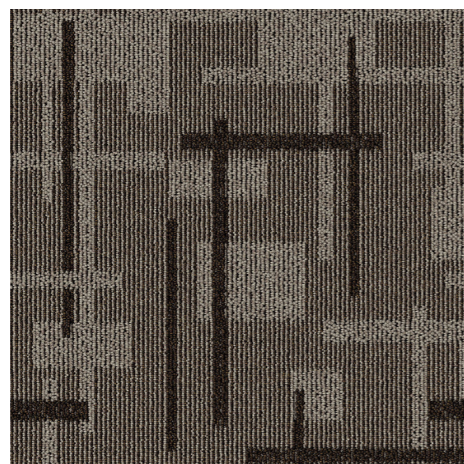


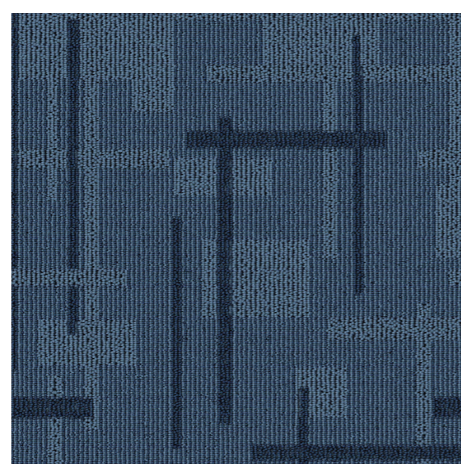
Black Horse : Carpet Tiles



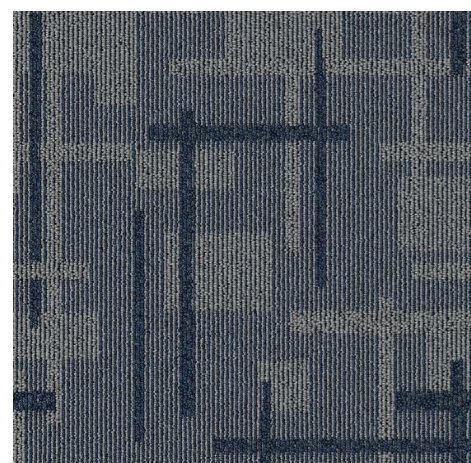
2645



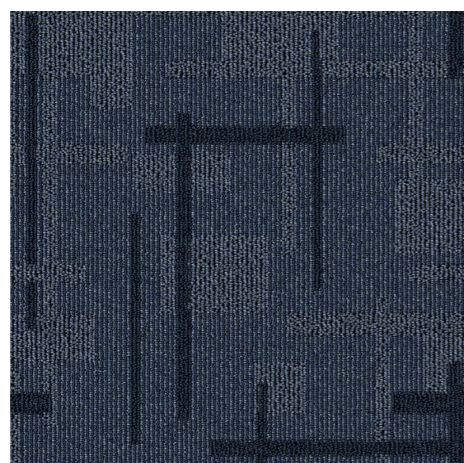
2648



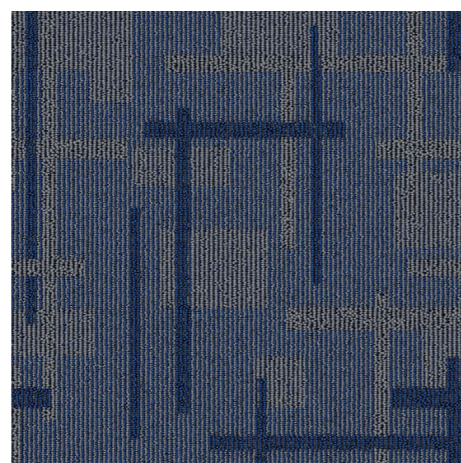
2655



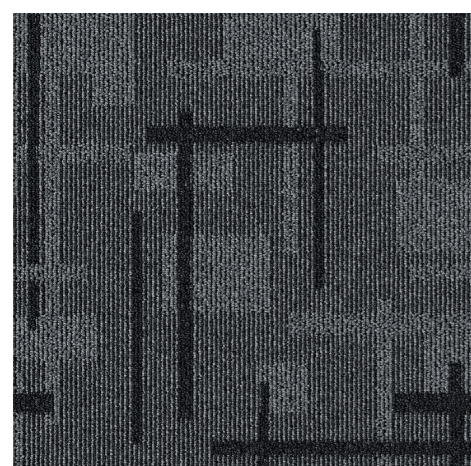
2675



2658



2656



2679

PRODUCT INFORMATION

Fiber	100% Olefin
Construction	Loop
Yarn Type	BCF Stanlon
Tufting Gauge	1/10"
Dye Method	Solution Dyed Olefin
Pile Weight	650 g/m ²
Number of Tufts	193060/m ²
Primary Backing	Non-Woven
Secondary Backing	PVC
Tile Size	50 cm x 50 cm
Pile Height	4.0 mm + 0.25 mm
Total Tile Height	7.0 mm + 0.5 mm

TECHNICAL PERFORMANCES

VOC (Green Label Plus)	ASTM D5116-06	<0.5 mg/m ² /hour
Flammability (Pill Test)	ASTM D-2859//FF 1-70//16CFR 1630	Pass 8/8
Reaction to Fire	EN ISO 9239-1:2002	Dfl - s1
Static Propensity	ISO 6356	0.2 kV
Color Fastness	AATCC/16	5/5 on Grey Scale
Soiling Propensity	ASTM D 6540-00	4
Dimensional Stability	EN 986	< 0.20%